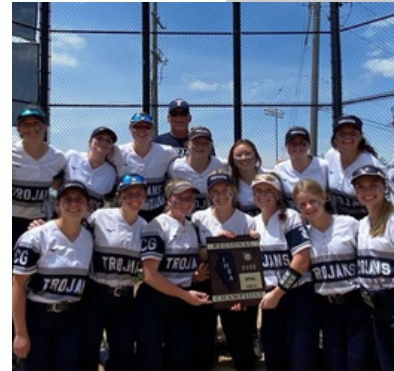


# CARY-GROVE HIGH SCHOOL



## WELCOME CLASS OF 2027



STUDENT ENROLLMENT  
FOR THE 2023-2024  
SCHOOL YEAR IS DUE BY  
DECEMBER 12, 2022.

# TABLE OF CONTENTS

Important Dates.....	1
School Enrollment.....	2
School Registration.....	3
Student Health Information.....	3
Curriculum Night .....	4
8th Grade Night.....	4
Placement into Core Courses.....	5
Choosing Elective Courses.....	5
Promoting Student Success.....	6
Graduation Requirements.....	6
In-School Supports for Students.....	7
One-to-One Technology Program.....	8
Software Systems & User Accounts.....	8
Activities.....	9
Athletics.....	10
Frequently Asked Questions.....	11
School Administration....	12



## PRINCIPAL'S WELCOME

Welcome Class of 2027 Trojans! We are excited to welcome you into our Cary-Grove family and introduce you to the traditions that Cary-Grove High School has to offer including Friday Night Lights, school dances, art shows, athletics, plays and musicals, and much more!



To begin the transition to high school, we invite all 8th grade students and their families to attend our upcoming 8th Grade Night on January 12, 2023. During that evening, you will have an opportunity to learn more about the courses and electives we offer at C-G. This is the time to explore your interests and talk to teachers about specific courses, so we can help you make decisions about which classes you want to enroll in for your freshman year. Prior to January 12, families will receive communication regarding course recommendations and offerings, so please be on the lookout for an email and a mailing from Cary-Grove High School in late December.

One of our pillars at Cary-Grove is engagement, and we believe our students have more success and feel more connected when they get involved in athletics and extracurricular activities, so all of our clubs and sports will have booths set up at 8th Grade Night with students and sponsors present to answer your questions. We encourage you to try these new activities and meet new people.

We look forward to meeting you soon!

Dr. Neil Lesinski  
Principal



## IMPORTANT DATES

November 4, 2022 - Incoming Freshman Enrollment Opens  
 December 12, 2022 - Enrollment Documents Due  
 December 16, 2022 - Core Course Placements Mailed Home  
 January 10, 2023 - Electives Fair  
 January 12, 2023 - 8th Grade Night  
 January 26, 2023 - Deadline to Change Elective Course Requests  
 August 10, 2023 - Distribution Day  
 August 16, 2023 - First Day of School

# SCHOOL ENROLLMENT

A required one-time process for students new to District 155.

District 155 has established a secure online portal to support incoming freshmen school enrollment. Parents may access the online portal [HERE](#) and must complete the process affirming their intent to send their child to a District 155 school in the 2023-2024 school year.

**Please make sure to enroll your incoming freshmen by December 12, 2022, so that we can be fully prepared for 8th Grade Night.**

See page 4 for details about 8th Grade Night.

## Required Enrollment Documents

**1 PROOF OF RESIDENCY:** Proof of residency can be satisfied by uploading the following:

### One of these documents:

- Valid rental contract
- Closing statement
- Current real estate tax bill

**And**

### Two of these documents:

- Valid driver's license
  - Current utility bill - ComEd, NICOR (within three months)
- OR**
- If there are special circumstances regarding your residency, please contact the District Registrar Enrollment Office.

**2 BIRTH CERTIFICATE:** All students must upload a birth certificate.



### Limited access to online services?

Enrollment documents can be dropped off at the District 155 office on school days between 8:00 a.m. – 2:00 p.m.



1 S. Virginia Road, Crystal Lake, IL 60014



### Questions about high school enrollment?

Call the District 155 registrar's office at 815-455-8510 for assistance

OR

Email: [enrollment@d155.org](mailto:enrollment@d155.org)

# SCHOOL REGISTRATION

School registration is different from school enrollment. School registration happens each year, whereas school enrollment only happens once in 8th grade or when a student moves into the district. Registration information will be sent to you in May. To help you prepare for registration, you may want to schedule a school physical now as it is part of the registration process. See below for more information.

## STUDENT HEALTH INFORMATION

### FRESHMAN REQUIREMENTS

#### FRESHMAN PHYSICALS

Per Illinois Department of Public Health regulations, all incoming freshmen must provide evidence of a current physical exam and up-to-date immunizations. To meet this requirement, the exam must be completed between August 15, 2022 – August 16, 2023.

The physical exam must be performed by a physician and be documented using the approved form available [here](#). *The State of Illinois Certificate of Child Health Examination form includes a section on side 2 which must be completed by the parent.* Students will not be cleared to attend classes until this requirement is satisfied.

Athletic physicals DO NOT meet the requirements for entry to 9th grade.

#### FRESHMAN DENTAL EXAMS

All 9th grade students are required to receive a dental exam from a dentist between November 15, 2022 - May 15, 2024. The dental exam form is available [here](#).

Parents can provide the completed physical exam form by:

- Email a scan/photo of the form to [cgnurse@d155.org](mailto:cgnurse@d155.org)
- Bring to Distribution Day



## ELECTIVES SHOWCASE JANUARY 10, 2023

Eighth graders will come to Cary-Grove during the day to take a tour of Cary-Grove which includes all of the elective areas we have to offer! Parents and guardians should be on the lookout for more information in December from their middle school/junior high school.



## 8TH GRADE NIGHT JANUARY 12, 2023

All incoming freshmen are expected to attend 8th Grade Night on **January 12**. Students will receive placements into English, math, and science courses in an email and mailing in mid-December. Students will request elective courses via an online form that will be emailed to families the week of January 5th and must be submitted by January 26 at 11:59 p.m. See page 5 for details about course placement.

Please make sure to enroll your incoming freshman by December 12, 2022.



## PLACEMENT INTO CORE COURSES

All 9th grade students at Cary-Grove High School are assigned to specific courses in English, math, and science. Courses in these core subject areas are leveled to best serve individual students by aligning to the student's subject aptitude, previous coursework experiences, and readiness for learning. Although some courses are not offered at every level, a general description of the levels is provided:

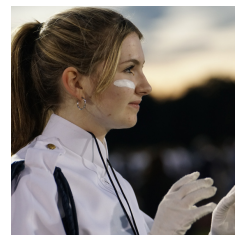
1. **General** - courses that build upon previously attained fundamental skills while preparing students for higher levels of rigor
2. **Honors** - courses that challenge students who have demonstrated a capacity to learn at an accelerated pace



Course placement is determined through a review of current academic achievement scores, recommendations from 8th-grade teachers, and *conferences between the high school and middle school about appropriate rigor.*

## CHOOSING ELECTIVE COURSES

Cary-Grove encourages students to participate in elective coursework that supports students' individual post-secondary goals. Our elective offerings are designed to align with career pathways, foster student talents, and encourage exploration of interests.



[Click here](#) to view full District 155 Curriculum Guide.

# PROMOTING STUDENT SUCCESS

Each student at Cary-Grove High School is assigned a school counselor to assist with academic planning, social-emotional needs, and post-high school goals.

Students needing assistance balancing their academic workload, extracurricular involvement, community involvement, and other obligations are encouraged to contact their school counselor to explore solutions.

## BALANCE

Each day students must balance a variety of school-related activities and personal obligations.

Students should consider these four factors as they choose elective courses and seek to manage their time and energy.

### ACADEMIC WORKLOAD

- Students are encouraged to participate in rigorous coursework aligned with their individual post-high school goals.
- Achieving a 2.75 or higher grade point average is a strong indicator of academic success.

### COMMUNITY INVOLVEMENT

- Student volunteerism is valued as a learning opportunity and as a service to others.
- Every student is encouraged to participate in community service during their 4-year high school experience.

### EXTRACURRICULAR INVOLVEMENT

- Club and team memberships provide opportunities to make meaningful social connections and develop interpersonal & intrapersonal skills.
- Each student is encouraged to join at least one school activity or school athletic team during each year of high school.

### LIFE BALANCE

- The combined impact of academic coursework, extracurricular involvement, community employment, community service, and other obligations can create unhealthy stressors for some students.
- All students are encouraged to consider the collective workload associated with their day-to-day routines as they balance their unique obligations.

## PROMOTING STUDENT SUCCESS

Direct support for academic needs and social-emotional challenges is available to all students.

### ACADEMIC SUPPORTS

An array of academic supports are available at Cary-Grove High School. These supports are available before school, during school, and after school to meet students' individual needs. Examples of our school's support include:

- Math/Lit Center
- Guided Study Hall

### SOCIAL-EMOTIONAL SUPPORTS

A full team of school social workers and school psychologists is available to help students develop coping strategies and to connect them with outside-of-school resources that may be valuable in forming long-term solutions to present-day difficulties. More information about social-emotional support at Cary-Grove High School can be found [here](#).

## GRADUATION REQUIREMENTS

Students must earn 20.25 credits to graduate. Specific course requirements are listed.



[Click here to learn about our Cum Laude Graduate criteria.](#)

\*The Career Experiences Program (CEP) requirement will be met by successful completion of all tasks assigned in SchoolLinks during the required seminar/advisory period each year. This graduation requirement begins with the class of 2025. State law requires all seniors to complete the FAFSA by graduation.

Classroom Driver Education	0.25 credit
Computer Education	0.5 credit
Consumer Education	0.25 credit
Electives	6.0 credits
English	4.0 credits
Health Education	0.50 credit
Mathematics	3.0 credits
Physical Education	1.75 credits
Science	2.0 credits
Social Studies	2.0 credits
*Career Experience Program	0 credits
<b>TOTAL</b>	<b>20.25 UNITS</b>



## ONE-TO-ONE TECHNOLOGY PROGRAM

All students at Cary-Grove High School are assigned a Google Chromebook as part of District 155's one-to-one technology program. Chromebooks are an integral part of our approach to teaching and learning, and students are expected to have their fully charged Chromebook in school each day. Student Chromebooks are optimized for learning. Access to selected device settings is controlled by school personnel in order to minimize distractions. More information about school-assigned Chromebooks, including details about technical support, is available [here](#).



## SOFTWARE SYSTEMS & USER ACCOUNTS

01

### Skyward

Skyward enables parents to view real-time data about their child's educational experience including demographic information, grades, attendance, class schedule, and health information. Access is secured by a unique username and password. Details about account creation will be sent to parents once registrars approve applications during the New Student Online Enrollment (NSOE) process.

02

### Canvas

Our school uses Canvas to manage and support students' learning experiences. The online platform provides students access to classroom activities, teacher resources, and collaborative tools that help students engage in their coursework.

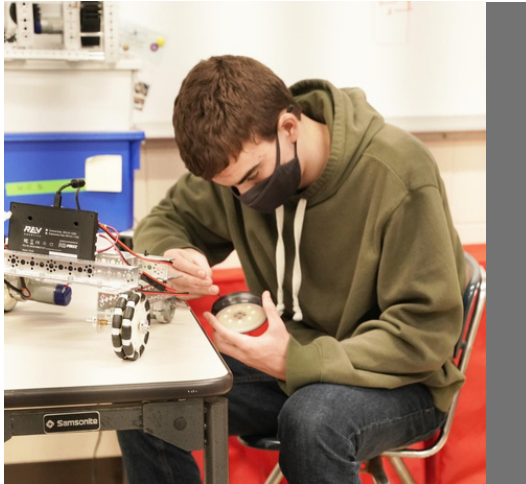
03

### SchoolLinks

Post-high school planning is a critical component of our school's approach to student success. SchoolLinks, an online tool, provides students access to many tools that aid college, career, and life readiness preparation so that students have a smooth transition after graduation. Parents will have access their child's profile so they can actively engage in the planning process with their child.



## ACTIVITIES



Students who participate in extracurricular activities and clubs develop life skills, create strong peer-to-peer relationships, feel more connected to their school, and are more likely to experience academic success. We encourage all students at Cary-Grove High School to join at least one extracurricular activity or club each year.



[Click here](#) for more information about activities and clubs, or contact our Activity Director, David Cook, [dcook@d155.org](mailto:dcook@d155.org).

Black Student Union  
CG Buddies  
Chess Team  
Color Guard  
Comedy Club  
Connect Crew  
Comics & Video Game Club  
Debate Club  
Fall Play  
Fellowship of Christian Athletes  
French Club  
Freshman Class  
German Club  
Gay Straight Alliance  
Interact  
Jazz Band  
Jazz Combo  
Junior Class  
Latino Leadership Club  
Math Team  
Musical  
National Honor Society  
Robotics  
Scholastic Bowl  
Science Olympiad  
Senior Class  
Sophomore Class  
Spanish Club  
Speech Team  
Spring Play  
Swing Choir  
Trojan Times Newspaper  
Trojan Voices  
Writing Club  
Yearbook

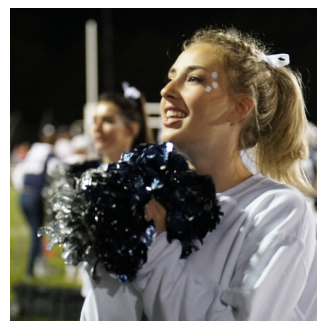
## ATHLETICS

Students at Cary-Grove High School may take part in a variety of competitive sports teams.

[Click here](#) for more information about registration and fees associated with participation in athletics. You may contact Athletic Director, Ryan Ludwig at [rludwig@d155.org](mailto:rludwig@d155.org) with questions about eligibility requirements.

FALL	WINTER	SPRING
Cheerleading	Boys & Girls Basketball	Baseball
Boys & Girls Cross Country	Cheerleading	Boys & Girls Lacrosse
Football	Dance	Girls Soccer
Boys & Girls Golf	Girls Gymnastics Co-Op	Softball
Poms	Boys Swimming Co-Op	Boys Tennis
Boys Soccer	Wrestling	Boys & Girls Track & Field
Swimming Girls		
Girls Tennis		
Volleyball		

Cary-Grove High School offers many summer sports camps designed to enhance athletes' readiness to participate. Watch on our website for a notice about summer camps in the spring.



## FREQUENTLY ASKED QUESTIONS

Q

Why do I need to provide proof of residency?

A

District 155 requires all new students to demonstrate they reside within the district boundaries.

Q

Does my child need to take a placement exam for 9th grade?

A

District 155 does not use placement exams. See page 5 for more information about the course placement process.

Q

When will my child receive a class schedule?

A

Students receive their class schedules on Distribution Day in August. More information about Distribution Day will be sent to parents when school registration opens in May.

Q

I want my child to take an additional class instead of having a study hall. How do I arrange for this?

A

Course selection guidelines will be reviewed at 8th Grade Night in January.

Q

My child wants to participate on an athletic team. Is there a fee to take part in athletics?

A

Yes. All student athletes are required to pay a \$100 participation fee per sport (\$200 maximum per student; \$400 maximum per household). See our school's Athletics webpage for more detail.

Q

My child is a student athlete. Will an athletic physical meet the requirements for a 9th grade physical exam?

A

Athletic physicals do not satisfy the requirement for a physical exam prior to the start of 9th grade. See page 3 for more details about health requirements or contact our school nurse, Martha Manno, at [mmanno@d155.org](mailto:mmanno@d155.org), for more information.

## SCHOOL ADMINISTRATION



**DR. NEIL LESINSKI**  
PRINCIPAL  
nlesinski@d155.org



**REBECCA SAFFERT**  
VICE PRINCIPAL  
rebsaffert@d155.org



**DR. HANK HARVEY**  
STUDENT SERVICES  
COORDINATOR  
hharvey@d155.org



**RYAN LUDWIG**  
ATHLETIC DIRECTOR  
rludwig@d155.org



**JIM KELLY**  
DEAN  
jkelly@d155.org



**RYAN SLATTERY**  
DEAN  
rslattery@d155.org

## DIVISION LEADERS



**TROY BRULEY**  
STEM  
tbruley@d155.org



**MIKE MANNING**  
INDUSTRY & CAREERS  
& WELLNESS  
mmanning@d155.org



**SHARLENE MONTGOMERY**  
HUMANITIES  
smontgomery@d155.org



**CORI SCHWARZROCK**  
INTERNATIONAL STUDIES  
cschwarzrock@d155.org



**DONA TAYLOR**  
SPECIAL EDUCATION  
dtaylor@d155.org