

## Troubleshooting Wireless Network Connections (Windows)

First you need to determine if you have a connection or not. Look in the system tray (lower right hand corner) and find the wireless network connection icon. You will see one of three things.



This means the computer has a wireless connection proceed to [Step 2](#)



If you see a red X you are not connected to an airport. Proceed to [Step 1](#)



An exclamation means you are connected to an airport but you have limited or no connectivity. Proceed to [Step 2](#)

### Step 1

Right-click the network icon and select View Available Wireless Networks.



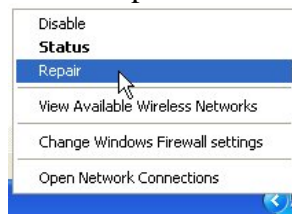
Select the network you wish to connect to and click the connect button.



The computer should now be connected to the network. Open a browser and see if you can get on the Internet. If you still can't connect to the Internet go to [Step 2](#).

### Step 2

Right-click the network icon and select Repair.



If you still can't connect or receive an error message contact Trey Breeden or one of the lab assistants for further support.